

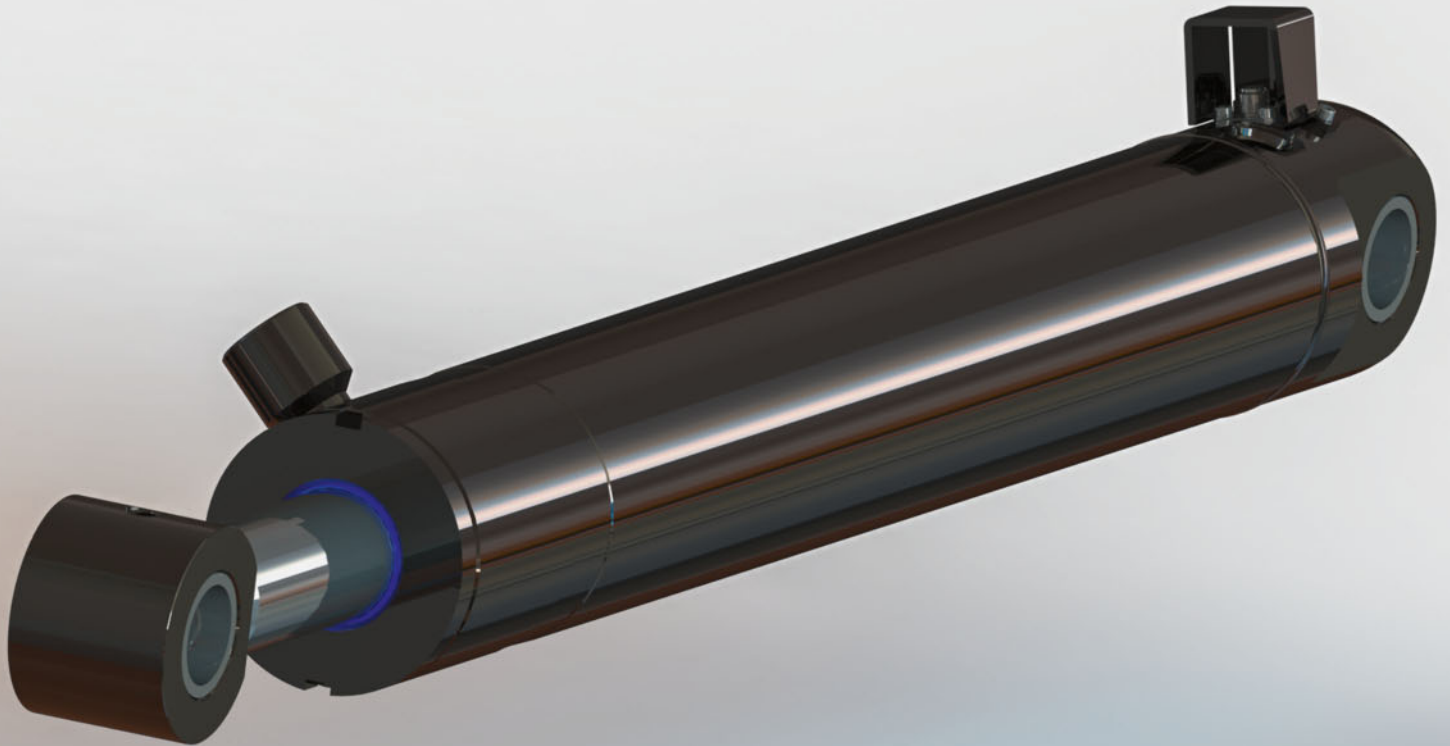


### Hydraulic cylinders for Waste Management

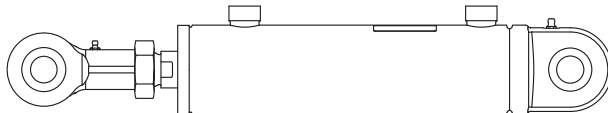
- Dump
- Arm
- Outside / Inside
- Reeving
- Tailgate
- Service Hoist



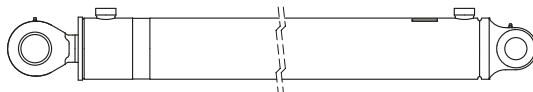
Please scan with your mobile device  
for further information.



Dump



Outside / Inside



Service Hoist



**Pacoma standard parameters**

- Closed length: up to 3000 mm
- Stroke: up to 2500 mm
- Piston diameter: up to 260 mm
- Piston rod diameter: up to 120 mm
- Operating pressure: up to 360 bar
- Temperature range: -25°C to 80°C
- Durability: > 2.000.000 cycles
- Cushioning: application-optimized cushioning characteristic (rod and bottom side)
- Seal system: protected against dieseling, low friction, no stick-slip-effect
- Bearings: hardened steel or bronze bearings
- Maintenance: easy and quick by form-fit piston fixation (low torque) – LIRE
- Installation: fix points, oil ports, grease nipples according to customer request
- Paint: high solid coating in any RAL color and levels
- Special Features: stroke measurement systems, integrated valves, external fluid lines, brackets

Other parameters are available on demand.

**USA**

1500 Armstrong Valley Road  
Halifax, PA 17032  
+1 650 241 1433

[www.pacoma.com](http://www.pacoma.com)

**Germany**

Königsberger Straße 12  
D-37269 Eschwege  
+49 5651 9240

**China**

No. 8 HuaSheng,  
Xikou Industry Park  
Fenghua District, Ningbo,  
Zip Code 315502  
+86 574 888 90 999

